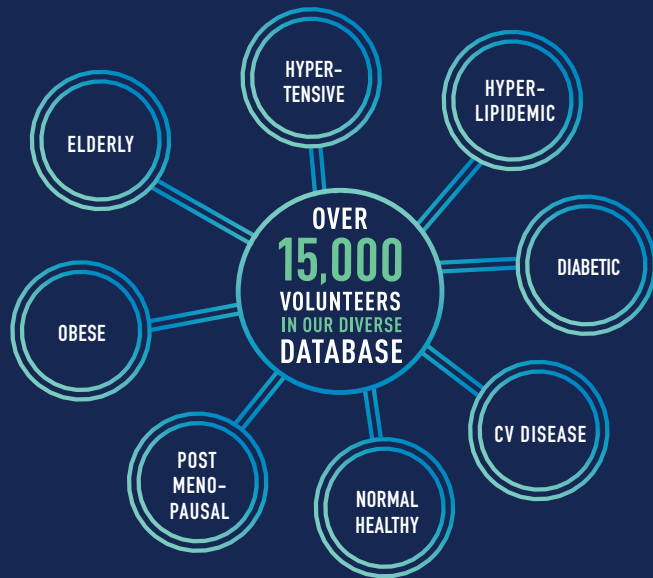


PHASE I UNIT

STATE-OF-THE-ART FACILITY AND EARLY
PHASE EXPERTISE

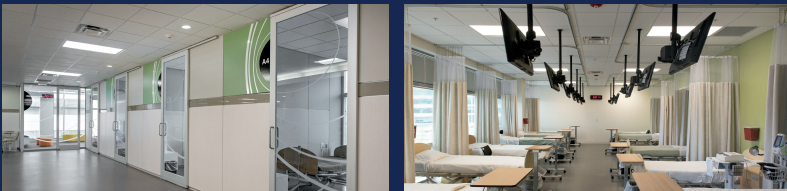
ROBUST VOLUNTEER DATABASE

EXPERT RECRUITMENT AND RETENTION



60 BEDS

SEMI-PRIVATE AND DORMITORY STYLE MODULES



CENTRALLY LOCATED AND EASILY ACCESSIBLE
FACILITY IN CINCINNATI, OH

STUDY DESIGNS

- SAD/MAD
- DRUG-DRUG INTERACTION
- FIRST-IN-HUMAN
- THOROUGH QT/QTc
- DEVICE AND DIAGNOSTICS
- PHASE IIA/PROOF OF CONCEPT
- BIOAVAILABILITY/BIOEQUIVALENCE
- DOSE PROPORTIONALITY
- FOOD EFFECT
- ADAPTIVE DESIGN

MEDPACE STANDS OUT

ACCELERATING EARLY PHASE STUDIES

WHAT'S THE DIFFERENCE?

ADVANTAGE

Shared campus with data management, biostatistics, regulatory and medical writing

Greater efficiency, collaboration and speed

"Right-Sized" CRO with visibility to management

Greater flexibility and responsiveness with corporate governance oversight

Experienced and highly-trained clinical team

Expert study execution

Wide recruitment area with dedicated call center

Increased access to eligible subjects

Volunteer customer care

Increased retention

Ohio-licensed pharmacy

On-site compounding and access to study medication

Access to bioanalytical and central laboratories

Study efficiencies across timelines and communication

MEDPACE

MEDPACE

INTEGRATED EFFICIENCY

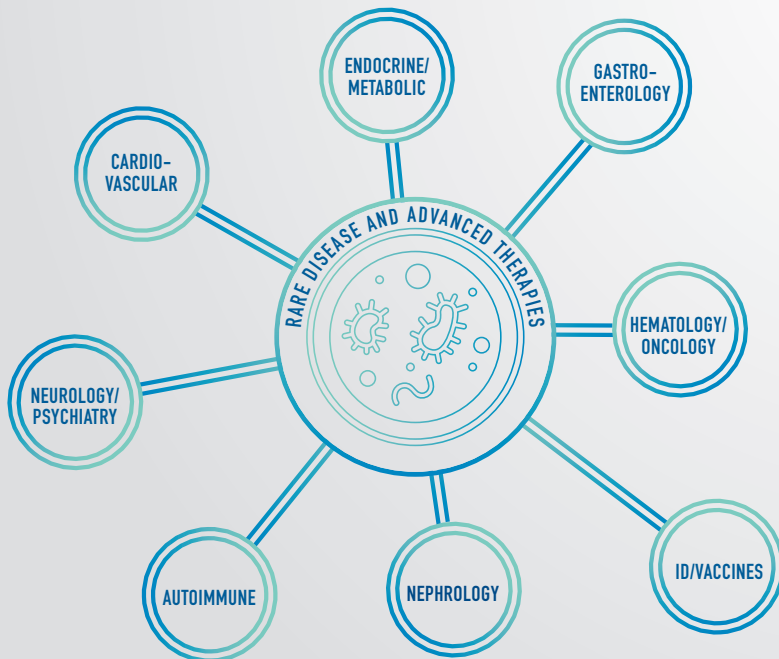
A MODEL OF COLLABORATION—
AN END TO END PARTNER



- CENTRAL LABS
- BIOANALYTICAL LAB
- CORE LABS
- PHASE I UNIT

THERAPEUTIC FOCUS

SCIENTIFIC EXPERTISE EMBEDDED
IN TRIALS—HANDS-ON & SPECIALIZED



ORGANIC GROWTH

STABLE AND DISCIPLINED—
PRESERVING A CULTURE
OF QUALITY



WHAT'S THE DIFFERENCE? WHY IT MATTERS

- | | | |
|---|---|---|
| 27 year history | ○ | Stability in leadership and deep institutional experience |
| Embedded physician leadership | ○ | Therapeutic expertise through trial lifecycle |
| Strategic regulatory affairs | ○ | Early planning for long term success |
| Scientific reputation and relationships | ○ | Access to KOLs and sites |
| One-of-a-kind research campus | ○ | Built-in efficiency |
| ClinTrak® | ○ | Technology for proactive study management |
| Budget management model | ○ | Operations focused on execution |
| Rigorous training program | ○ | Consistent quality around the world |
| Office-based model | ○ | Facilitates collaboration and communication |

GLOBAL REACH

OPERATIONAL AROUND
THE WORLD—WHEREVER
RESEARCH IS HAPPENING

